

DATE:	10/15/2018
FILE:	16064_03_HOUSE LAYOUTS.DWG
PROJECT NO:	16064.03
CAD:	BEG
QUALITY ASSURANCE:	BEG
REVISIONS:	
DATE	DESCRIPTION

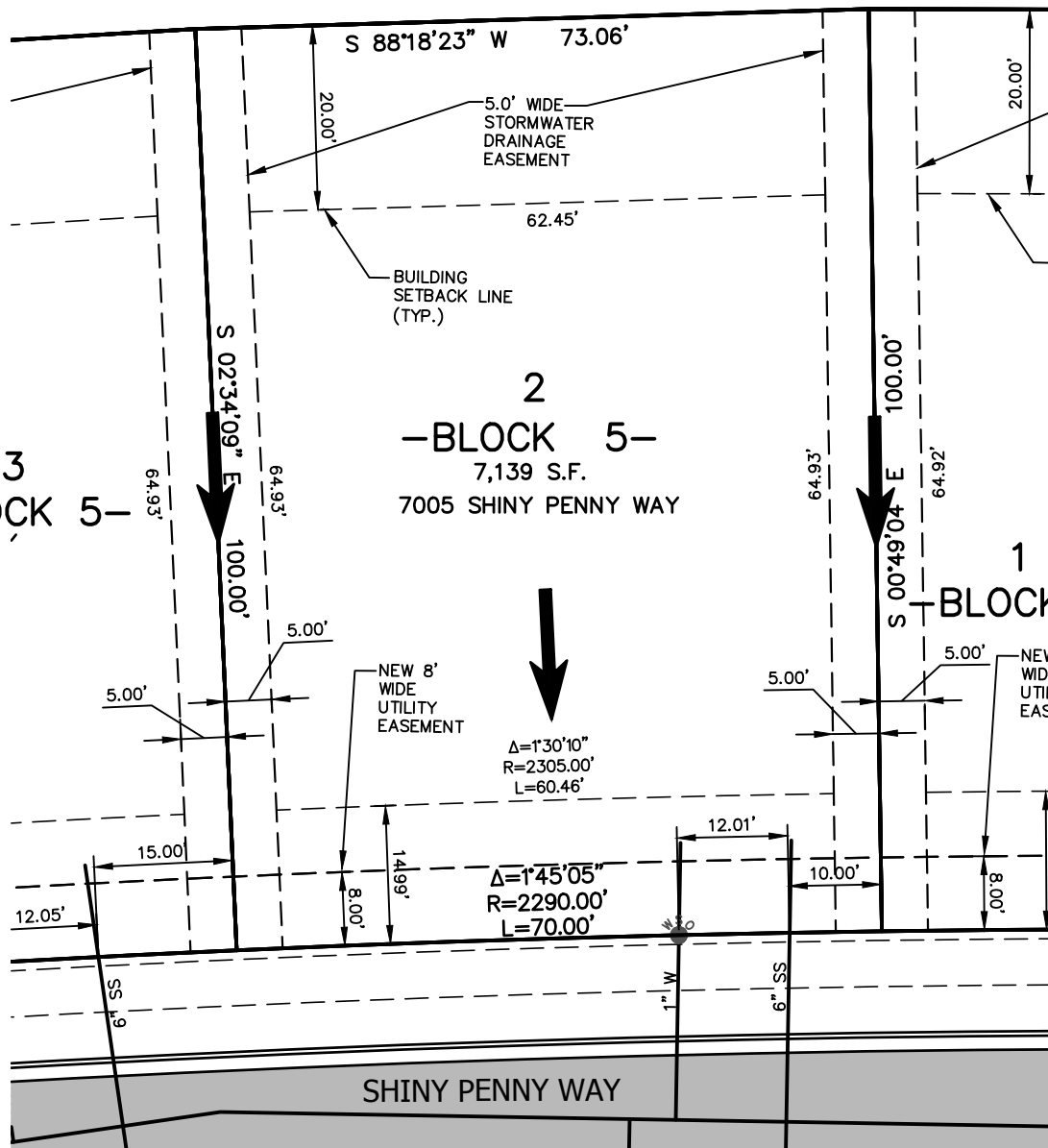
LOT 2, BLOCK 5, COPPER RIDGE SUBDIVISION, SEVENTH FILING
 7005 SHINY PENNY WAY
 BILLINGS, YELLOWSTONE COUNTY, MONTANA
 HOUSE LAYOUT AND STAKING PLAN

**10
 -BLOCK 3-**

**2
 -BLOCK 5-
 7,139 S.F.
 7005 SHINY PENNY WAY**

**3
 -BLOCK 5-**

**1
 BLOCK 5-**



NOTE:
 1. ALL DRAINAGE SHALL BE RETAINED ON THE LOT IN ACCORDANCE WITH CITY OF BILLINGS CODE & DIRECTED TOWARD THE PUBLIC RIGHT-OF-WAY UNLESS SPECIFIC DRAINAGE EASEMENTS EXIST.
 2. THIS IS AN EXHIBIT INTENDED TO SHOW LOT SETBACKS AND STREET FEATURES AND IS NOT A PLAT OF LEGAL REPRESENTATION OF LOT BOUNDARIES. REFER TO THE FINAL PLAT FOR LEGAL BOUNDARIES.

← = GENERAL DIRECTION OF STORM RUNOFF FROM LOT TO STREET. FINAL GRADING PER BUILDING CODE.

